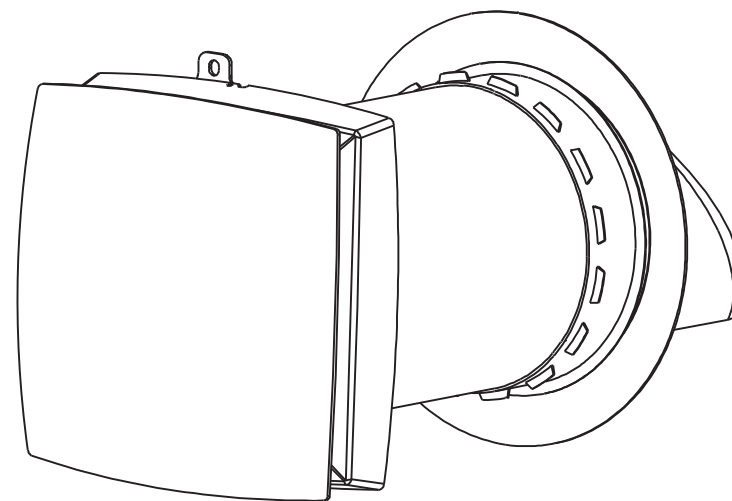


AV-TTW6-W

Eco Pair za jednu sobu
Ventilator za povrat energije
Korisničke upute



CE

Sadržaj

SIGURNOSNI ZAHTJEVI	3
UVOD	6
KORIŠTENJE	6
U PAKIRANJU	6
GLAVNI TEHNIČKI PARAMETRI	7
DIZAJN I RAD	8
INSTALACIJSKA SKICA	9
NAČINI RADA	10
UGRADNJA VENTILATORA	11
OPIS FUNKCIJA	14
DALJINSKI UPRAVLJAČ	14
FUNKCIJA SINKRONIZACIJE VEZE GLAVNA-POMOĆNA	15
POSTAVKE GLAVNE JEDINICE	16
POSTAVKE POMOĆNE JEDINICE	17
RESETIRANJE I OTKAZIVANJE GLAVNE I POMOĆNE JEDINICE	18
IOT MREŽNE ZNAČAJKE	19
KORACI WIFI POVEZIVANJA	20
ODRŽAVANE	23
PRAVILA ZA SKLADIŠTENJE I TRANSPORT	24
RJEŠAVANJE PROBLEMA	25

SIGURNOSNI ZAHTJEVI

- Pažljivo pročitajte korisnički priručnik prije rada i instalacije ventilatora s povratom topline AV-TTW6-W.
 - Instalacija i rad ventilatora mora se izvoditi u skladu s ovim korisničkim priručnikom, kao i odredbama svih važećih lokalnih i nacionalnih građevinskih, električnih i tehničkih kodova i standarda.
 - Upozorenja sadržana u ovom korisničkom priručniku moraju se ozbiljno razmotriti budući da sadrže ključne informacije o osobnoj sigurnosti.
 - Nepoštivanje sigurnosnih propisa može dovesti do ozljeda ili oštećenja ventilatora.
 - Pažljivo pročitajte priručnik i čuvajte ga sve dok koristite ventilator.
 - Ovaj uređaj smiju koristiti djeca starija od 8 godina i osobe sa smanjenim fizičkim, osjetilnim ili mentalnim sposobnostima ili nedostatkom iskustva i znanja ako su pod nadzorom
- ili su ih podučili u vezi s korištenjem uređaja na siguran način i ako razumiju uključene opasnosti.
 - Djeca se ne smiju igrati s uređajem.
 - Čišćenje i korisničko održavanje ne smiju obavljati djeca bez nadzora.
 - Ako je kabel za napajanje oštećen, mora ga zamijeniti proizvođač ili njegov serviser ili slično kvalificirana osoba kako bi se izbjegla opasnost.
 - Ventilator se preporučuje postaviti na više od 2,1 m iznad poda.
 - Moraju se poduzeti mjere opreza kako bi se izbjegao povratni tok plinova u prostoriju iz otvorenog dimnjaka ili drugih uređaja na gorivo.
 - Ispušni ventilatori mogu negativno utjecati na siguran rad uređaja koji koriste plin ili druga goriva (uključujući one u drugim prostorijama) zbog povratnog toka plinova izgaranja. Ovi plinovi potencijalno mogu dovesti do trovanja ugljičnim monoksidom.

Nakon ugradnje ispušnog ventilatora kao što je pregradni ili cijevni ventilator, rad otvorenih dimnih plinskih uređaja treba ispitati stručna osoba kako bi se osiguralo da ne dolazi do povratnog toka plinova izgaranja.

- Baterije koje nisu punjive se ne mogu napuniti.
- Baterije moraju biti umetnute s ispravnim polaritetom.
- Istrošene baterije potrebno je ukloniti iz uređaja i sigurno odložiti.
- Ako se uređaj ne koristi na dulje vrijeme, baterije se trebaju izvaditi.
- Stezaljke napajanja ne smiju biti u kratkom spoju.
- Dobro pazite na daljinski upravljač kako djeca ne bi progutala baterije i izazvala nezgode.

Simboli korišteni u priručniku



UPOZORENJE!



NEMOJ!

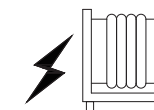
Sigurnosne mjere za instalaciju ventilatora




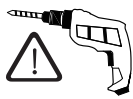
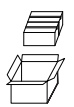
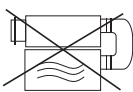
Ventilator mora biti isključen iz napajanja prije montaže ili popravka.




Ventilator ne smije raditi izvan temperaturnog raspona navedenog u korisničkom priručniku ili u agresivnom ili eksplozivnom okruženju.

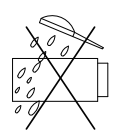
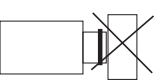
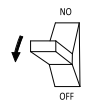
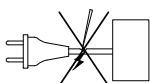
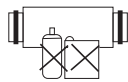
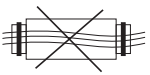
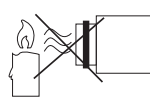


Ne postavljajte nikakve uređaje za grijanje ili drugu opremu u blizinu strujnog kabela ventilatora.

	Nemojte koristiti oštećenu opremu ili vodiče za spajanje ventilatora na napajanje.
	Prilikom postavljanja ventilatora pridržavajte se sigurnosnih propisa koji se odnose na korištenje električnih alata.
	Pažljivo raspakirajte ventilator.
	Koristite ventilator samo onako kako je to odredio proizvođač.

Sigurnosne mjere za instalaciju ventilatora

	Ne dodirujte upravljač ili daljinski upravljač mokrim rukama. Ne provodite održavanje ventilatora mokrim rukama.
	Ne dopustite djeci da upravljaju ventilatorom.

	Ne perite ventilator vodom. Zaštitite električne dijelove ventilatora od prodora vode.
	Nemojte blokirati zračni kanal dok je ventilator uključen.
	Isključite ventilator iz napajanja prije održavanja.
	Nemojte oštetiti kabel za napajanje tijekom rada ventilatora. Ne stavljajte nikakve predmete na kabel za napajanje.
	Držite eksplozivne i zapaljive proizvode dalje od ventilatora.
	Ne otvarajte ventilator dok je u pogonu.
	Nemojte dopustiti da strujanje zraka iz ventilatora bude usmjereno na uređaje s otvorenim plamenom ili na svijeće.

UVOD

Ovaj korisnički priručnik uključuje tehnički opis rada, upute za montažu i montažu, tehničke podatke za ventilator s povratom topline AV-TTW6-W.

KORIŠTENJE

- Ventilator je dizajniran za izmjenu zraka u stanovima, vilama, hotelima, kafićima i drugim kućanskim i javnim objektima. Ventilator je opremljen keramičkim regeneratom energije i ventilatorom koji dovodi svježi i odvodi zrak uz povrat energije.
- Ventilator je dizajniran za montažu kroz zid. Teleskopska izvedba ventilatora omogućuje ugradnju u zidove debljine od 230 mm do 420 mm.
- Ventilator je predviđen za kontinuirani rad uvijek priključen na električnu mrežu.
- Transportirani zrak ne smije sadržavati zapaljive ili eksplozivne smjese, isparavanja kemikalija, grubu prašinu, čestice čađe i ulja, ljepljive tvari, vlaknaste materijale, patogene ili bilo koje druge štetne tvari.



Operacije instalacije i spajanja mora izvoditi samo odgovarajuće osoblje nakon odgovarajućeg sigurnosnog uputstva.

Mjesta postavljanja ventilatora moraju spriječiti pristup djece bez nadzora.

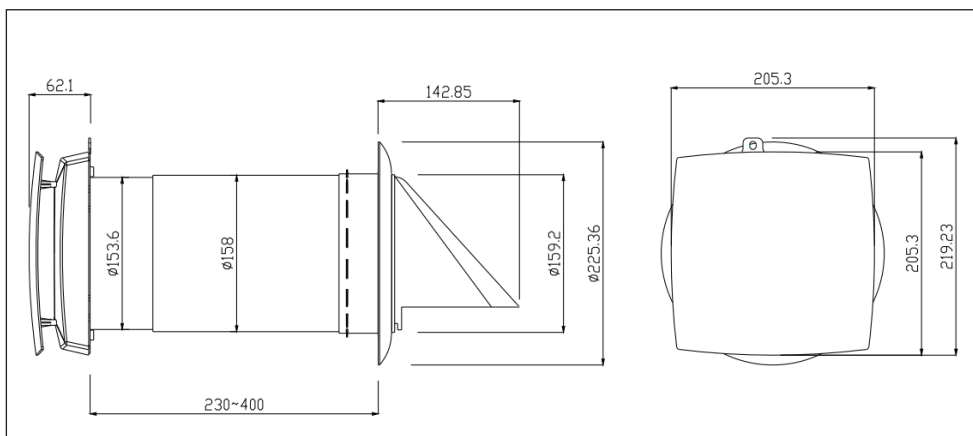
U PAKIRANJU

Ventilator	1
Torba za pribor	1
Daljinski upravljač	1
Korisnički priručnik	1
Kutija za pakiranje	1

GLAVNI TEHNIČKI PARAMETRI

- Ventilator je dizajniran za unutarnju primjenu s temperaturom okoline u rasponu od -20°C do +50°C i relativna vlažnost ispod 80%.
- Ventilator je klasificiran kao električni uređaj klase II.
- Zaštita od prodora (IP) od krutih predmeta i tekućina IP22.
- Dizajn ventilatora redovito se poboljšava, tako da se neki modeli mogu malo razlikovati od onih opisanih u ovom priručniku.

DIMENZIJE VENTILATORA (mm)

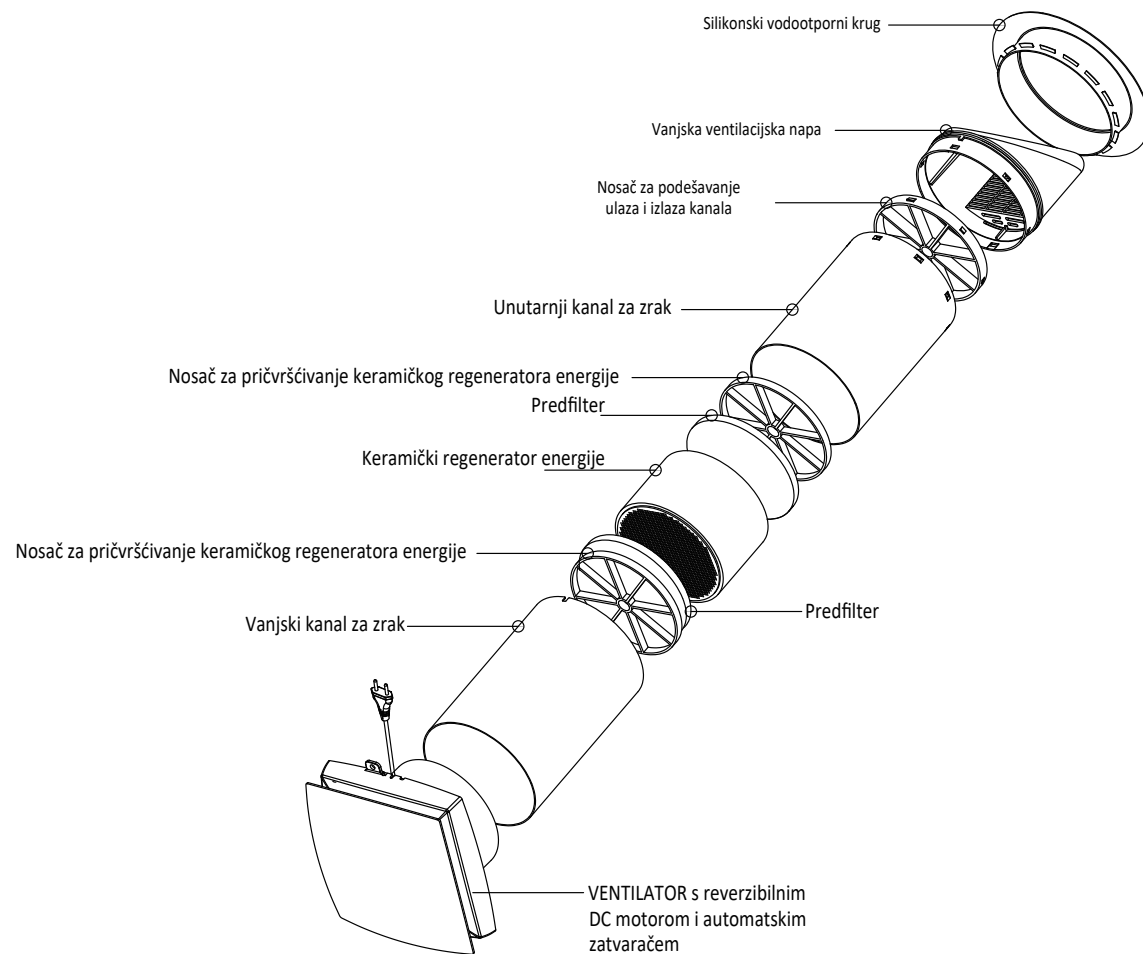


Napon	100-240 V AC
Frekvencija	50/60 Hz
Ulazna snaga	5.9/8.8/11.3 W
Struja	0.03/0.05/0.06 A
Broj okretaja u minuti	2000 (max)
Protok zraka (L/M/H)	26/55/64 m ³ /h
Razina zvučnog tlaka na 1 metar (dBA)	28/32.9/36.7 dB(A)
Razina zvučnog tlaka na 3 metra (dBA)	12/27.5/31.9 dB(A)
Efektivnost regeneracije	up to 97%
Ocjena zaštite od prodora	IP22
Promjer zračnog kanala	159 mm
SEC	Class A
Vrsta montaže	Montaža na zid
Težina	3.4kg

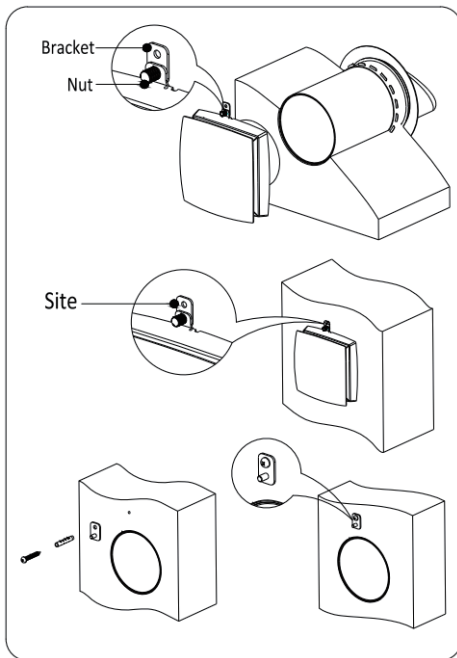
DIZAJN I RAD

- Ventilator se sastoji od teleskopskog zračnog kanala podesive duljine koja se regulira položajem unutarnjeg zračnog kanala unutar vanjskog zračnog kanala, ventilacijske jedinice i ventilacijske nape.
- Dva filtera i keramički regeneratore energije nalaze se unutar unutarnjeg kanala. Filtri su dizajnirani za pročišćavanje dovodnog zraka i sprječavanje ulaska stranih tijela u regeneratore i ventilator.
- Keramički regeneratore energije izvlači energiju iz ispušnog zraka kako bi zagrijao ili ohladio dovodni zrak.
- Regeneratore je opremljen užetom za povlačenje kako bi se olakšalo njegovo izvlačenje iz ventilatora. Regeneratore se postavlja na izolacijski materijal koji se koristi i kao brtva.
- Ventilator je dostupan za ugradnju s unutarnje strane zida.

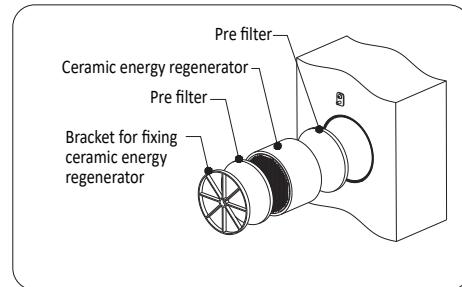
INSTALACIJSKA SLIKA



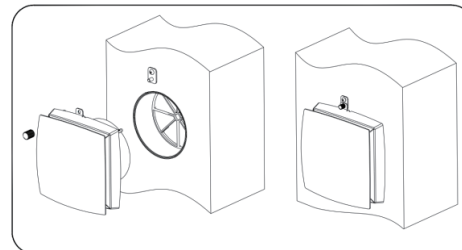
4. Fix the fan and the bracket by the nut, put the fan into the inner duct, mark the drilling hole site on the wall surface as the location, remove the fan, drill 1*6mm hole on the marked place and put in the rubber plug (as pack accessories). Install the retaining bracket with a screw (as the pack accessories).



5. Install the filter, ceramic energy regenerator, another filter, and bracket inside the inner duct according to the correct sequence, before leaving the factory, all these parts are installed, so this part is mainly for the maintenance guidelines.



6. Install the fan on the wall surface. fix the fan to the bracket by the nut.



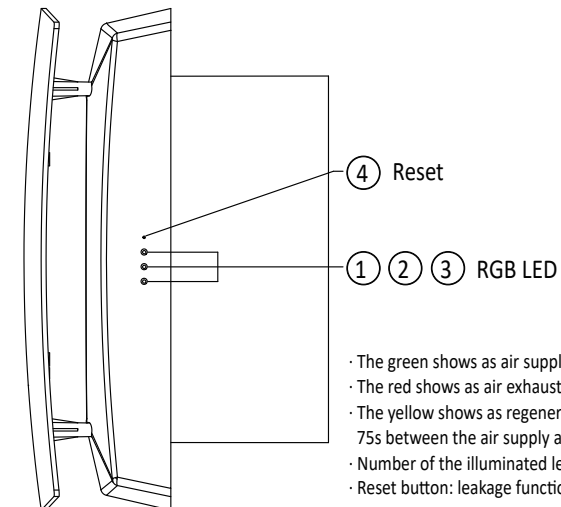
CONNECTION TO POWER



Disconnect The Ventilation From Power Mains To Any Electric Installation Operations.

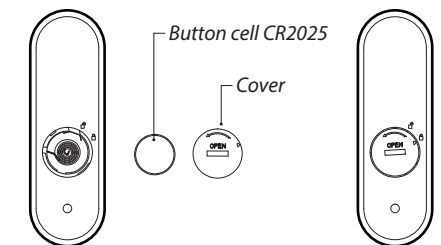
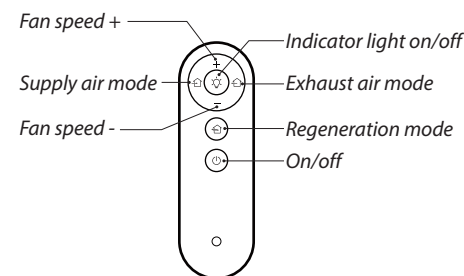
The ventilator is rated for connection to single-phase AC100-240 V/50-60 Hz power mains. Connect the ventilator to the socket directly.

FUNCTION DESCRIPTION



- The green shows as air supply.
- The red shows as air exhaust.
- The yellow shows as regeneration mode which is changed in 75s between the air supply and the air exhaust.
- Number of the illuminated led means the fan speed, 3 speeds in total.
- Reset button: leakage function.

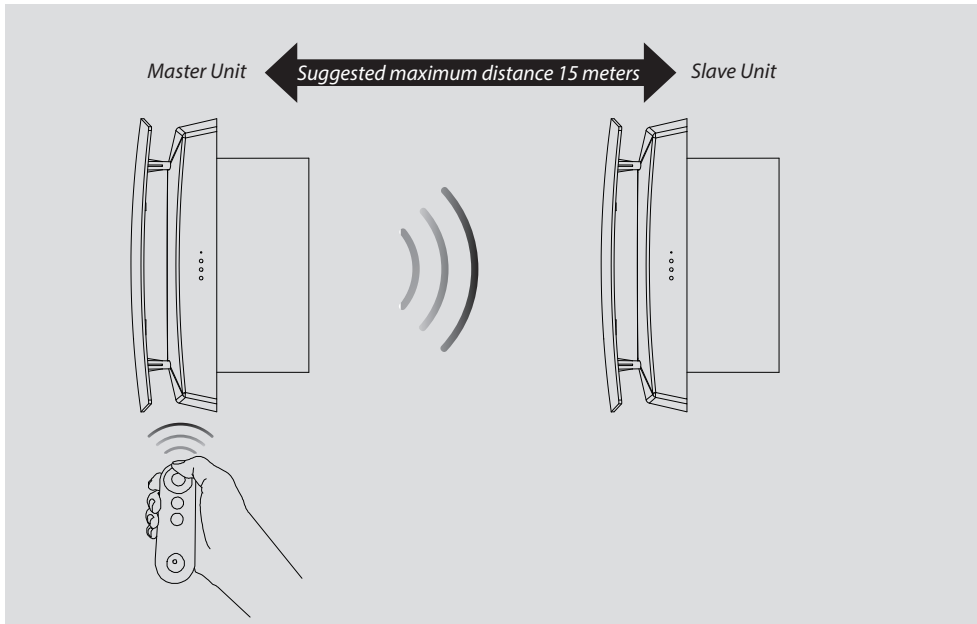
REMOTE CONTROLLER



Please put in the button cell (prepared by user) before using the controller

- After putting in the battery, turn the battery cover clockwise as shown in the figure, until the triangular arrow on the cover indicates the locking pattern, that it's locked.
- To remove the battery, unscrew the battery cover counterclockwise as shown in the figure, until the triangular arrow on the cover indicates the unlock pattern, that it's released, and the battery can be taken out.
- Please take good care of the remote control to prevent children from swallowing batteries and causing accidents.

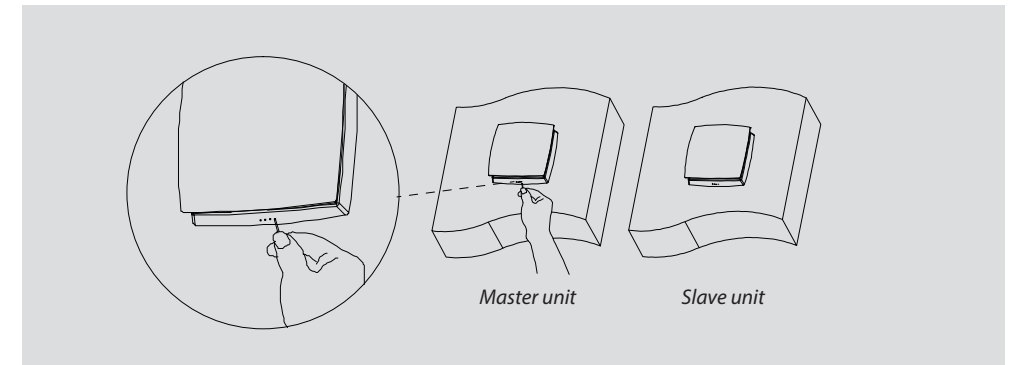
MASTER-SLAVE LINKAGE SYNCHRONIZATION FUNCTION



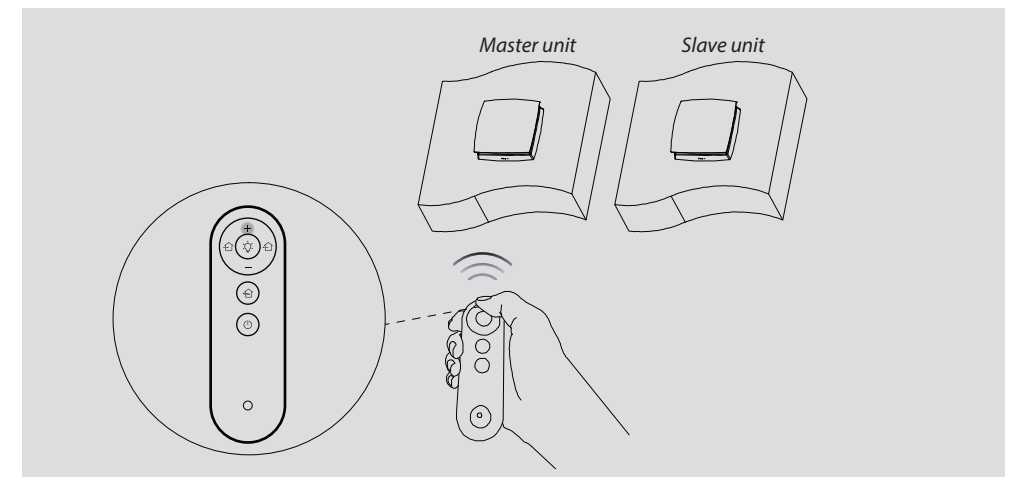
1. When the MASTER/SLAVE unit is not set, the remote controller can be used to control any machines independently.
 2. After the MASTER/SLAVE unit is set, the remote controller can only control the MASTER unit. And MASTER unit sends the signal to the SLAVE unit (the SLAVE unit doesn't receive the remote controller signal), so that the SLAVE unit runs the same mode as the MASTER unit. (One MASTER unit can be connected to multiple SLAVE units)
 3. In the regeneration mode, the fan running direction of the SLAVE unit is opposite to that of the MASTER unit, other states are consistent with the MASTER unit.
- » The maximum unobstructed communication signal distance between MASTER unit and SLAVE unit is around 15m.
» The signal of MASTER unit and SLAVE unit can pass through the 180mm thick wall, but the transmission distance will be slightly reduced.

MASTER UNIT SETTINGS

1. Feed power to the ventilator but in OFF state, use a needle to press the Reset button twice quickly (as shown in the figure). One green LED light will flash slowly, indicating that it enters a multiple linkage connection states.

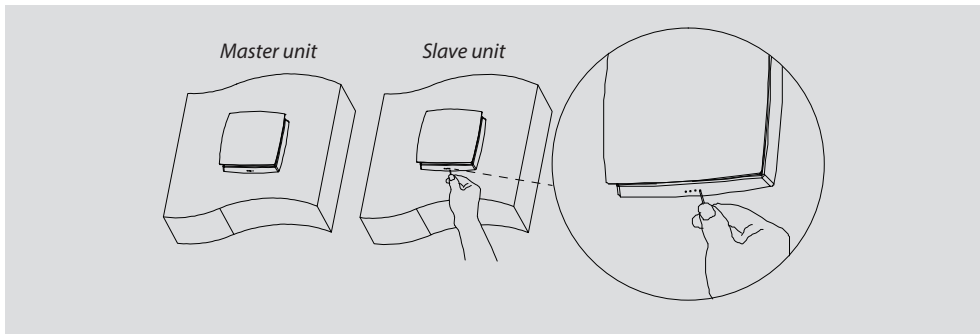


2. Direct the remote control to the machine and press the "+" button to set the machine to MASTER (as shown in the picture). One green LED light flashes five times and off, then the setting is completed. (Pay attention that after setting the MASTER unit, then this unit can only be controlled by the matching controller)

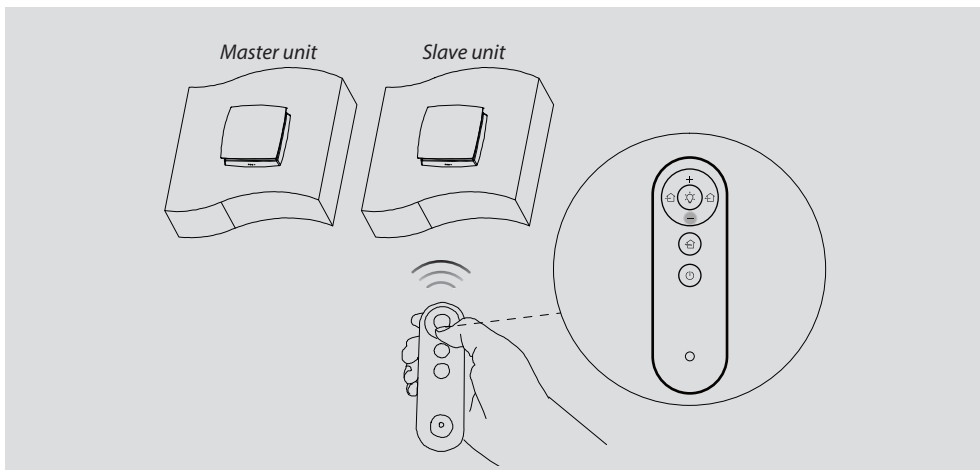


SLAVE UNIT SETTINGS

1. The same steps as the MASTER setting. Feed power to the ventilator but in the OFF state, use a needle to press the Reset button twice quickly (as shown in the figure). One green LED light will flash slowly, indicating that it enters a multiple linkage connection states.

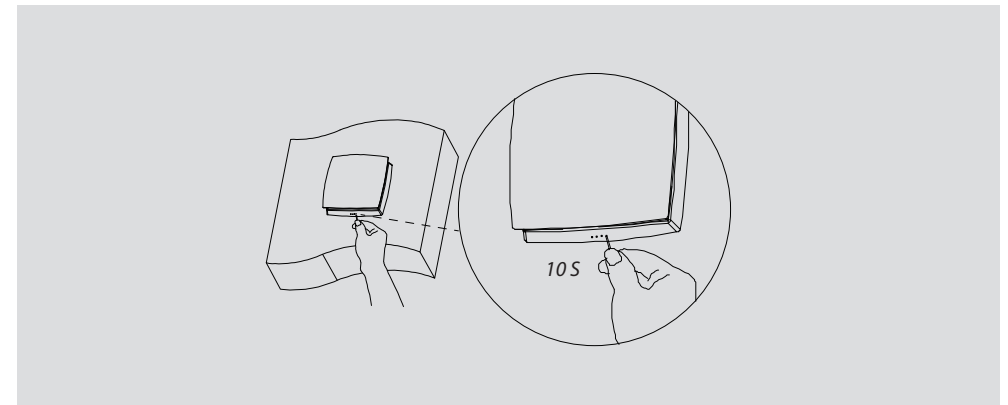


2. Use the remote controller (the same controller as its MASTER setting), towards the slave unit, and press "-" button to set the machine to SLAVE (as shown in the picture). One red LED light flashes five times and off, then the setting is completed. (multiple slave units can be set, except for the units which already been set as MASTER).



MASTER AND SLAVE UNITS RESET AND CANCELLATION

Feed power to the ventilator but in OFF state, use a needle to press the Reset button over 10 seconds. Until all yellow LED lights flash 3 times, indicating that the MASTER or SLAVE setting to the ventilator is reset.



IOT NETWORKING FEATURES

Scan the QR code and search "Smart Vent" from Google Play or App store to download the App.



or



Work with Alexa and Google Assistant

The connected ventilator is the MASTER one.
Any SLAVE ventilator is not able to be connected to the network. If a ventilator is connected to the network before the SLAVE setting, it will go offline once being set as the SLAVE. This linkage icon only displayed when MASTER and SLAVE linkage is set.

AV-TT6W-W

The name of the connected ventilator. Multiple ventilators can be connected with different names.

Fan speed setting, 3 speeds in total.

Working mode (supply air mode, exhaust air mode, regeneration mode)

1

Illumination (LED lights) On/Off

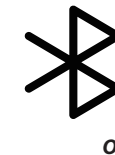
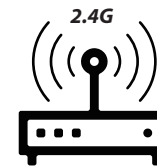
Timer setting button
 Set the timer on/off, under the setting period, can set the working mode and fan speed together.

On/Off button

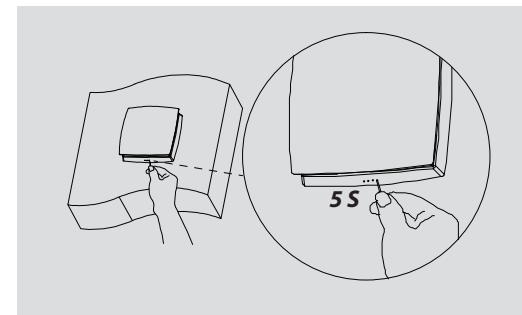
ON Exhaust Light Timer

WIFI CONNECTION STEPS

1. Before linkage connection, please connect the mobile phone to the home wifi router (2.4G only), enable Bluetooth function, and ensure that the mobile phone can receive the wifi signal when put next to the ventilator.

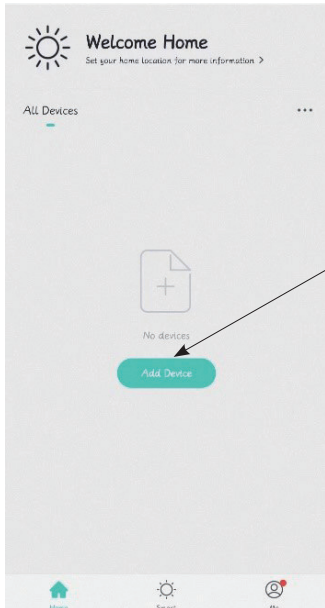


2. Feed power to the ventilator but in OFF state, use a needle to press the Reset button over 5 seconds, until all red LED lights flash, at this time, the ventilator is on the wifi connecting state (Red LEDs blink).



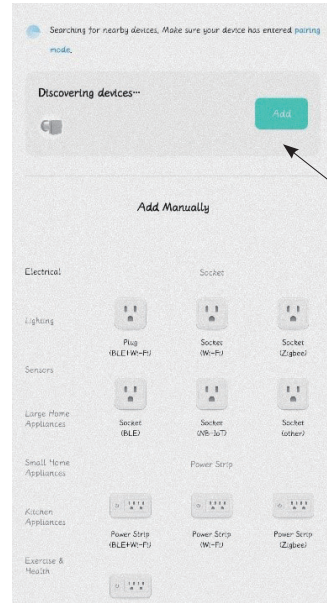
Korisničke upute za korisnika i kvalificiranog instalatera

3. Open the mobile app, enter the operation page, click the add device, and search for the device.



Click The Add Device Button

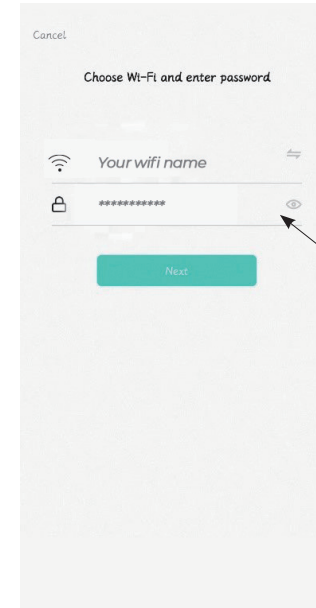
4. At this time, the app receives the signal from the ventilator. Click Add button to connect the machine to the network.



Click the Add Button

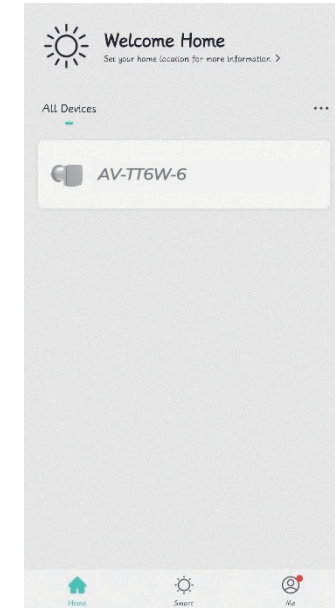
Korisničke upute za korisnika i kvalificiranog instalatera

5. Find the same wifi signal as the mobile phone linked, make sure the wifi names are the same, and then enter the wifi password.



Connect Your Wifi

6. After the connection is completed, the user can enter the operation page to control the ventilator.



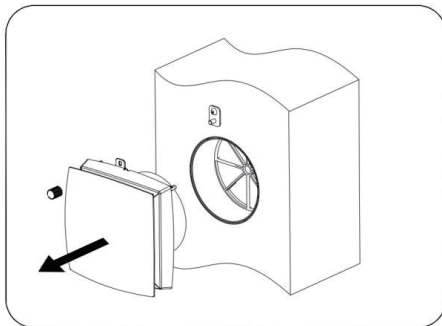
MAINTENANCE



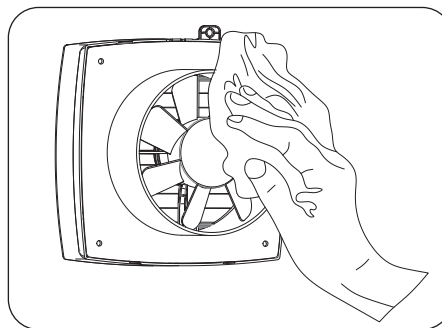
Disconnect The Ventilator From Power Supply Prior To Any Maintenance Operations.

Maintenance of the ventilator means regular cleaning of the ventilator surfaces of dust and cleaning or replacement of the filters.

1. Fan maintenance (once per year).

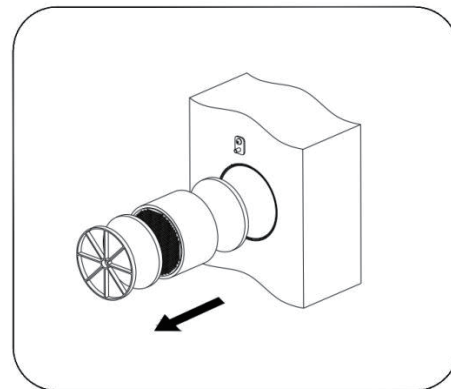


Loose the nut and pull the ventilator to remove.



Clean the impeller blades. Use a soft brush, doth or a vacuum cleaner to clean the impeller. Do not use water abrasive detergents, solvents, or sharp objects. The impeller blades must be cleaned once in a year.

2. Regenerator and filter maintenance (4 times per year).



Remove the airflow rectifier and the filter in front of the regenerator.

Pull the regenerator cord to remove the heat exchanger from the air duct.

Be careful while pulling the exchanger to avoid damage.

Remove the filter after the regenerator.



Clean the filter as often as it gets dirty, but at least 3-4 times a year. Clean the filters, let them get dry, and install the dry filters inside the air duct. Vacuum cleaning is allowed. The filter rated service life is 3 years. Contact the Seller for spare filters.



Even regular technical maintenance may not completely prevent dirt accumulation on the regenerator assemblies. Subject the exchanger to regular cleaning to ensure high heat exchange efficiency. Clean the exchanger with a vacuum cleaner at least once a year.

STORAGE AND TRANSPORTATION RULES

Store the ventilator in the manufacturer's original packing box in a dry place.

The storage environment must not contain aggressive vapors and chemical mixtures provoking corrosion, insulation, and sealing deformation. Use hoist machinery for handling and storage operations to prevent ventilator damage in a consequence of failing or excessive oscillation. Fulfill the handling requirements applicable for the applicable freight type.

Transportation with any vehicle type is allowed provided that the ventilator is protected against mechanical and weather damage.

Avoid any mechanical shocks and strokes during handling operations.

TROUBLESHOOTING

Fault	Possible reasons	Fault handling
The fan does not start up during the ventilator start-up.	No power supply.	Make sure that the ventilator is properly connected to the power and make any corrections, if necessary.
	The motor is jammed, or the impellers are clogged.	Turn the ventilator off. Troubleshoot the motor jam and the impeller dogging. Clean the blades. Restart the ventilator.
Low airflow.	Low setting fan speed.	Set higher speed.
	The filter, the fan, or the exchanger are dirty.	Clean or replace the filter, and clean the fan and the exchanger. For the exchanger and the filter maintenance, refer to page 14.
Noise, vibration.	The impeller is dirty.	Clean the impeller.
	Loose screw Connection of the ventilator casing or the ventilation hood.	Tighten the screws of the ventilator or the outer ventilation hood.
Master-Slave units connection failed.	Master-Slave units setting by a different controller.	According to the manual, use the same remote controller for the Master-Slave units settings.
	The ventilator is installed in where has a lot of metal surrounding/there are interference sources around.	Excessive metal structures and interference sources around will weaken the wireless signal, please remove these interference sources or change the installation location.
	The distance between Master and Slave units is too long/the wall between them is too thick.	Please change the installation location according to the distance indicated in the manual.
	Other	Please reset the Master-Slave setting (press and hold the RESET button for ten seconds), and set it again after a period of power off.
WiFi connection failed.	The mobile phone is connected to the WiFi 5G network.	Please switch to the 2.4G frequency/network to connect.
	Wrong connected to public WiFi (such as WiFi in shopping malls, hotels, etc. That need to be registered and logged in).	Please set up the WIFI router correctly.
	The router has not yet set an account and password.	
	The router is set to a higher security level.	
	Exceeded the limit of devices that can be connected to the router.	
	Bluetooth on the mobile phone is off.	Enable Bluetooth on the mobile phone to improve the success rate of networking.